

CONCH
海螺生态地板



Conch Ecological Floor





Product Introduction
产品介绍

海螺生态地板具有绿色环保零甲醛、防水防潮、防火阻燃、吸音减噪、耐磨耐用、防滑等突出特点，已成为当今世界上非常流行的一种新型轻体地面装饰材料。

Product introduction: Conch ecological flooring has many advantages such as environment friendliness, non-formaldehyde, waterproof, moisture resistance, fire retardant, sound absorption and noise reduction, wear resistance and durability, non-slip, etc. it has already become a kind of new and popular floor covering in the world.

SPC石塑地板结构分解图
SPC Flooring Composition

UV涂层

UV Coating

增强地板抗污、抗菌和防水性能，防止滑倒摔伤，让污渍处理更简单。

Enhanced performance of stain-resistance, anti-bacteria and water-proof avoids slips and falls and makes stain cleaning much more easier.

耐磨层

Wear-resistant Layer

保障地板花色长时间不被磨损，地板经久耐用。

Protects the floor color from wearing for a long time and ensures the durability.

彩膜层

Color Film

高仿真实木天然纹理，呈现真实自然质地。

High simulation of natural solid wood presents a real feeling of texture.

SPC锁扣

SPC Interlock

锁扣设计，安装简易，可DIY完成。

Interlock design and easy DIY installation.

底部静音层

Bottom Mute Layer

免胶安装，防潮，健康环保，减震静音。

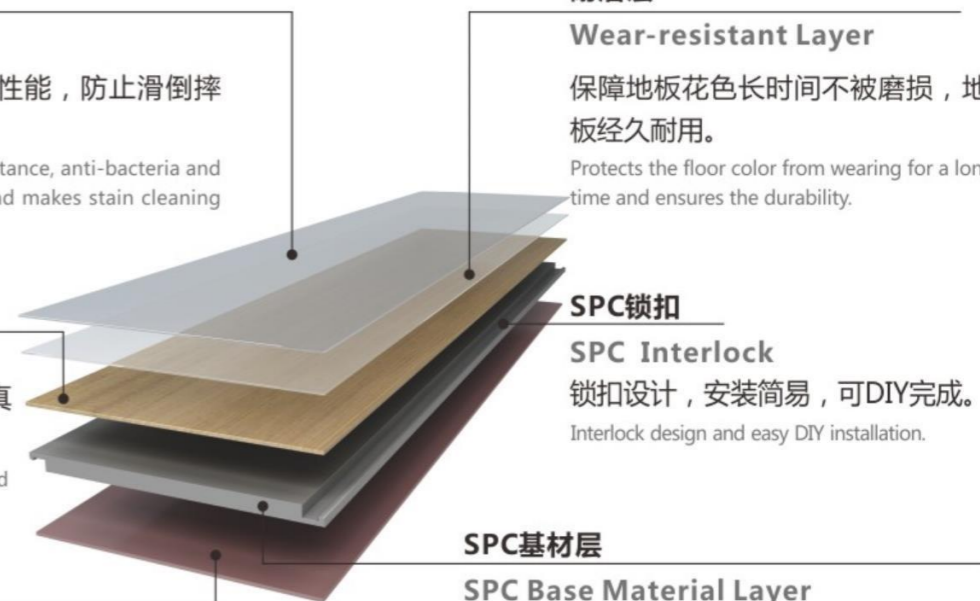
With good performance of shock absorption, noise reduction and glue-free installation, Moisture-proof and environment friendly as well.

SPC基材层

SPC Base Material Layer

钙粉和树脂粉按一定比例混合形成复合地辅材料，增强抗压能力。

Calcium powder and resin powder are mixed in a certain proportion to form auxiliary materials for composite flooring to enhance the pressure resistance capacity.



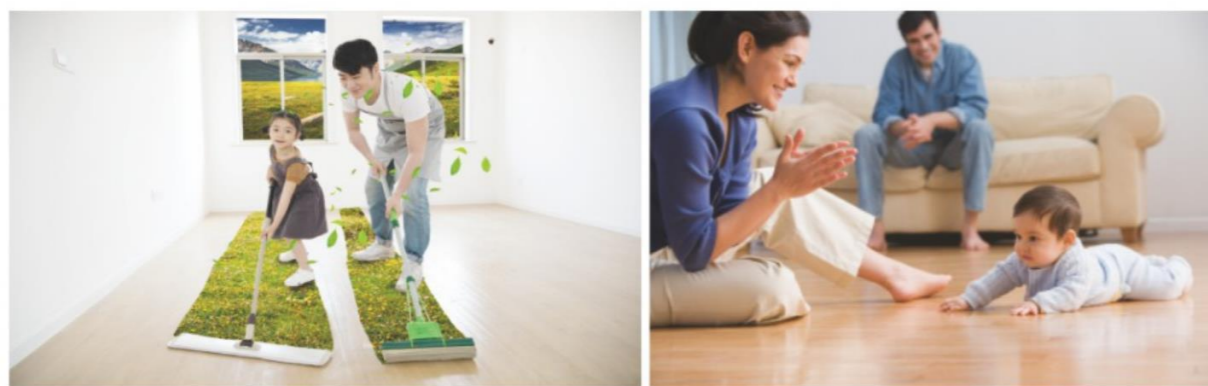
● 绿色环保、零甲醛

Environment-friendly and Formaldehyde-free

甲醛释放量为零，不含任何放射性元素。
Without any emission of formaldehyde and radioactive element.

● 防水 Waterproof

主要成分对水无亲和性。
The main elements are non-hydrophilic.



● 耐磨、使用寿命长

Wear-resistance and Long Service Life

表面敷有透明耐磨层，耐磨远超强化地板，使用寿命长。
With transparent wear-resistant layer, which has much better performance than laminate flooring and has long service life.

● 高弹性、抗冲击

High elasticity, Impact resistance

质地柔韧，富有弹性，脚感舒适度高；抗冲击性能强，弹性恢复能力好。
Flexible texture, full of elasticity, high comfort foot feeling. Strong impact resistance, good elastic recovery ability.

● 防火阻燃、适用地热

Fire Retardant and Suitable for Underfloor Heating

生态地板无机物填充量高，本身不燃烧且能有效阻燃，防火指标可达B1级，优于木质地板。

The amount of inorganic fillings in ecological floor is high that itself does not burn and can effectively retard flame. The fire proof reaches B1 grade, which is better than wood floor.



● 超强防滑、防刮

Super Anti-slip and Scratch Proof

产品表面耐磨层有超强的防滑功能，摩擦系数大于0.5。
The wear-resistant layer on the surface has good performance of anti-slip, and the friction coefficient is greater than 0.5.

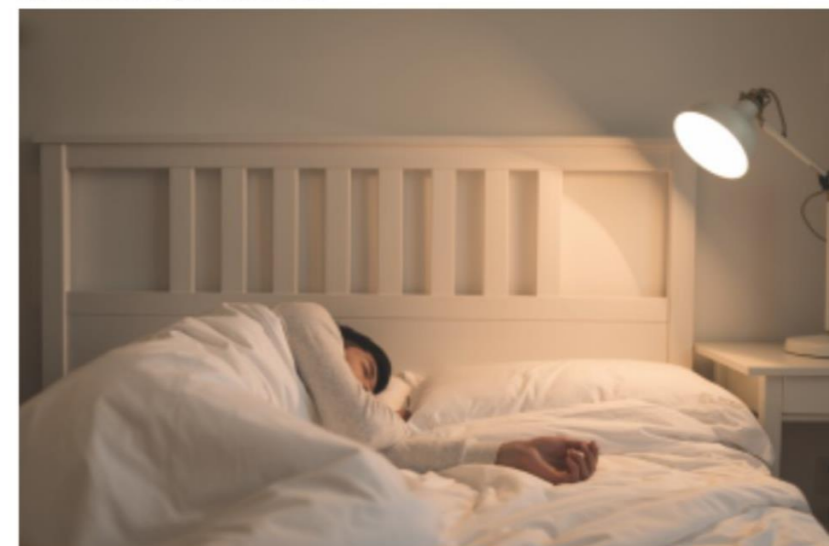


● 吸音降噪

Acoustic absorption and insulation

具有普通地面材料无法相比吸音效果，其吸音可达20分贝，能提供更为舒适、更加人性化的生活环境。

Its sound insulation is superior to ordinary floor materials, and the sound absorption can reach 20db. In addition, Conch Floor can provide more comfortable and humanized living environment.





Flooring Color
Design
地板花色

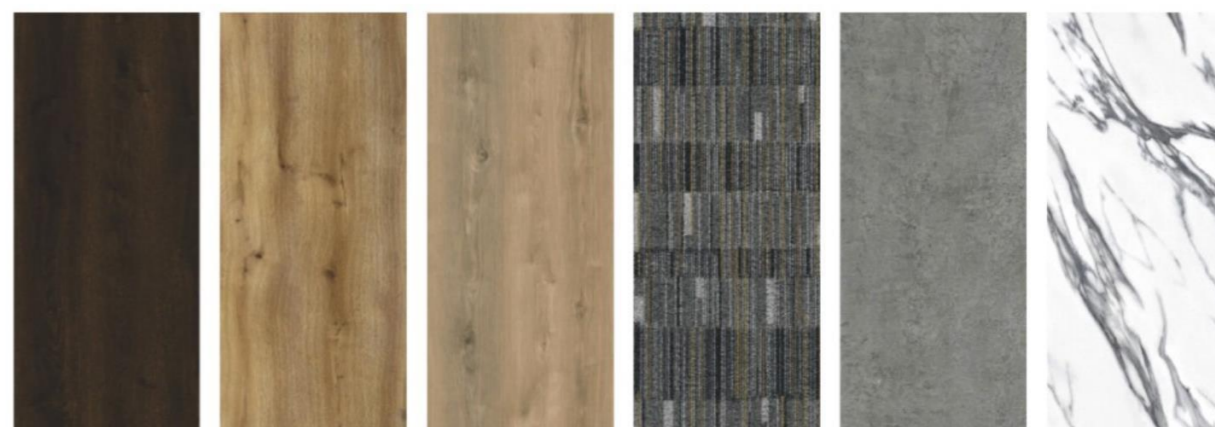
给您想要的美好生活，给您一个温馨舒适的家
Offer you a comfortable home and wonderful life.



HD-1037-32 金枫木 HD88006-009 艾格尔橡木 HD88018L-009 德克斯特橡木 HD88003-003 夏威夷相思木 HD88065L-002 海兰橡木 HD88066L-001 弗特尔橡木



HD88021-003 埃菲尔橡木 HD88042-006 辛特拉橡木 HD88026L-002 哥德堡橡木 HD88055L-001 赫尔曼橡木 HD8A805-12 欧洲原橡 HD8856L-7 北欧橡木



HD8850L-4 加州橡木 HD8853L-2 古色橡木 HD8842L-1 山核桃木 HD6803-1 地毯花纹 HD89707-004 吉尔曼石纹 HD6809-1 爵士白石纹

实际颜色以样品为准 Actual color is subject to sample



艾格尔橡木

HD88006-009



灰色，简约、有品味，
恰到好处的装饰搭配，
如精灵处于森林般的宁静和自在。
This gray concise style, and tasteful,
with suitable decorating makes home peaceful
and free as a fairy in a forest.



金枫木

HD-1037-32

这种品味体现在设计上的细节的把握，
每一个细小的局部和装饰，都要深思熟虑。
The taste reflects the details of designing.
Each tiny part and decorating needs deep consideration.



德克斯特橡木

HD88018L-009

青灰色的橡木色使人仿佛居住在林中的湖边小屋,使人心旷神怡,烦恼全无。

Green gray oak makes you relaxed and happy, it seems like living in a lake house in woods.



夏威夷相思木

HD88003-003

相思木在家中增添了一丝暖意,大方而又惬意

The Acacia adds home warmth and cozy.

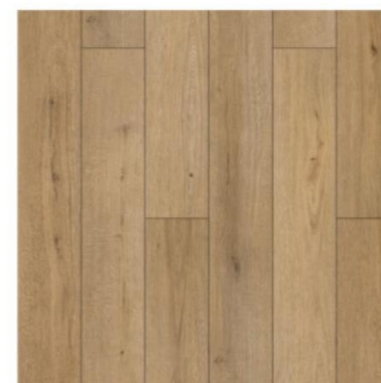




海兰橡木 HD88065L-002

海兰橡木铺设在家中，毫不夸张毫不张扬，
把家居环境装点得素雅、纯净、融入与自然的和谐与安宁。

Its modest luxury decorates your room with simple,
elegant and pure when you putting Highland Oak
in your home, and it melts in natural harmony and peace.



弗特尔橡木 HD88066L-001

温暖的色系,像阳光一样的色彩,
洒落在家中的各个角落, 安逸舒适, 享受家中乐趣。

The warm color likes sunshine full
of every corner of home, it feels comfortable and pleasant.



辛特拉橡木
HD88042-006

地中海的风吹进了家，
足不出户也可以享受到浓浓的地中海风情。

You can feel rich Mediterranean
style indoors when wind blowing.



埃菲尔橡木
HD88021-003



浓厚的法式色调，
使人仿佛置身于浪漫之都巴黎，
原来自己的家也可以这么Romantic。

Rich French tone makes your houseromance,
you as if place in romantic city – Paris.



哥德堡橡木

HD88026L-002

美式独有的狂野与激情，
生活就该如此，
奔流向前，激情四射。

It's special American wild and passion style.
Running forward,
Bursting with passion, life is life.



赫尔曼橡木

HD88055L-001

美式独有的狂野与激情，生活就该如此，
奔流向前，激情四射。

It's special American wild and passion
style. Running forward, Bursting with passion, life is life.



欧洲原橡
HD8A805-12

充满了简约却不简单，整个家居环境清新自然。
European Original Oak is concise but not simple, it's filled with fresh and nature of room.



北欧橡木
HD8856L-7

毫不夸张毫不张扬，这个色彩界的百搭王者。
This color is not exaggeration, not play, it goes with every home style.

古色橡木

HD8853L-2



瞬间消除一天忙碌的工作，
缓解一天的疲惫，像阳光一样的色彩，
洒落在家中的各个角落。

The Ancient Oak likes sunshine filling
with room to help you eliminate the whole day's busy work fatigue.



加州橡木

HD8850L-4



严谨、认真、理性与感性交织的特性融入色彩，
如此一来，家居环境也充满了理性和智慧的元素。

It mixes rigorousness, carefulness, ration and emotion into color,
so home environment is also full of ration and wisdom.



山核桃木 HD8842L-1

微风吹进了家，
温暖的阳光也照在了地上，
足不出户也可以享受到浓浓的风情。
You can enjoy blowing breeze and warm sunshine indoor.



地毯花纹 HD6803-1

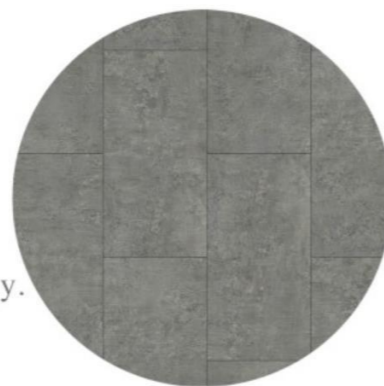
周末宁静的午后拿上一份报纸，一杯咖啡再配上一份甜品。
Installing this flooring at home, you can prepare a cup of coffee
and tasty dessert when you reading newspapers on a peaceful
weekend afternoon.

吉尔曼石纹

HD89707-004

工业风的水泥质感，给人一种神秘和高级感，
重工业的刚硬和唯美相互碰撞，
大胆奔放，给您一个不同体验的生活。

The industrial style of cement brings mystery and superiority.
It integrates the grid of heavy industries and the art
of aesthetic to show a different experience life.



爵士白石纹

HD6809-1

独有的狂野与激情，
也不失为家中添上一道亮丽的风景线。

It's unique wild and passion add a beautiful landscape.



Technical
parameter
技术参数

检测数据由第三方公司Intertek提供
Test data provided by third-party company Intertek



检测项/detection items	检测方法/test method	结果/result
甲醛/formaldehyde	ASTM D5116 ISO160009	未检出/Undetected
二甲苯/xylene		未检出/Undetected
甲苯/toluene	ASTM D5116 ISO160009	未检出/Undetected
镉/cadmium	ASTM F963	未检出/Undetected
汞/mercury		未检出/Undetected
铅/lead		未检出/Undetected
铬/chromium		未检出/Undetected
砷/arsenic		未检出/Undetected
硒/selenium		未检出/Undetected
锑/antimony		未检出/Undetected
邻苯二甲酸二甲酯 (DEHP) Dimethyl phthalate (DEHP)	ASTM D3421 EN 14372	未检出/Undetected
邻苯二甲酸丁苄酯 (BBP) Butyl benzyl phthalate (BBP)		未检出/Undetected
邻苯二甲酸二丁酯 (DBP) Dbutyl phthalate (DBP)		未检出/Undetected
邻苯二甲酸二正辛酯 (DNOP) Di-n-octyl phthalate (DNOP)		未检出/Undetected
邻苯二甲酸二异葵酯 (DIDP) Diisosunflower phthalate (DIDP)		未检出/Undetected
邻苯二甲酸二异壬酯 (DINP) Diisononyl phthalate (DINP)		未检出/Undetected
导热系数thermal conductivity	ASTM C518	0.238W/m·K
尺寸变化率 dimensional change rate	GB/T 34440	纵向：0.12% 横向：0.05%
剥离强度peel strength		纵向：115N/50mm 横向：120N/50mm
锁扣强度/lock strength		平均值：7.6KN/m



Specifications
产品规格

地板尺寸
(Flooring Size(mm))
1220mm*178mm

地板英寸
Flooring Size(in.)
48.03*7.007

地板厚度
Flooring Thickness(mm)
4mm、5mm、6mm

单片面积
Area per piece(sq.m or sq.ft.)
0.2167sq.m or 2.3325sq.ft.



Installation
Steps
安装步骤



01

将B板凸倾斜嵌入凹槽内，锁紧放平。
Put the inclined convex surface of the B plate into groove, lock and keep flat.



02

放平后B板与C板的间距约2-3毫米成平行线。
Keep 2-3mm space between B & C plate and make parallel lines.



03

将A板与B板同时提起（与地面约成45度角）。
Lift A & B plate and make inclined 45 degrees.



04

将B板面朝C板方向平推，直至锁紧。
Push B plate into C plate until locked.

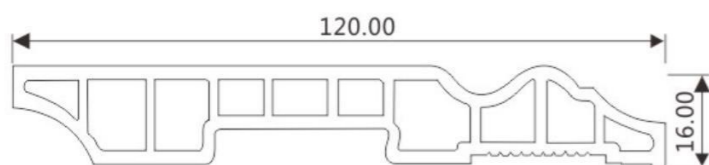


05

用手掌将A板和B板向下压平，勿使蛮力硬压地板。
Press A & B down to floor by your hand, do not use brute force.

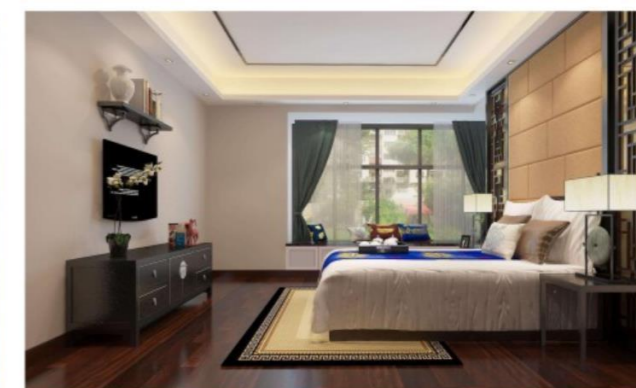


地板辅材



壁厚wall thickness : 2.0-2.2mm
筋厚rib thickness : 1.7mm

规格 Specifications		
高度Height (cm)	厚度Thickness (cm)	长度Length (m)
10	1	2.5
10	1.6	3



踢脚线样色选择
skirting color selection.



真方胡桃 Real walnut



7002



8072



7004



6015



6008